



[I-21/111/2025-W&M Section]

GOVERNMENT OF INDIA/भारत सरकार
MINISTRY OF CONSUMER AFFAIRS, FOOD AND PUBLIC DISTRIBUTION
उपभोक्ता मामले, खाद्य एवं सार्वजनिक वितरण मंत्रालय
DEPARTMENT OF CONSUMER AFFAIRS/ उपभोक्ता मामले विभाग
LEGAL METROLOGY DIVISION/ विधिक मापविज्ञान प्रभाग

Krishi Bhawan/कृषि भवन, नई दिल्ली
Dated/दिनांक:- 27.05.2025

Certificate of Approval of Model/ मॉडल का अनुमोदन प्रमाणपत्र

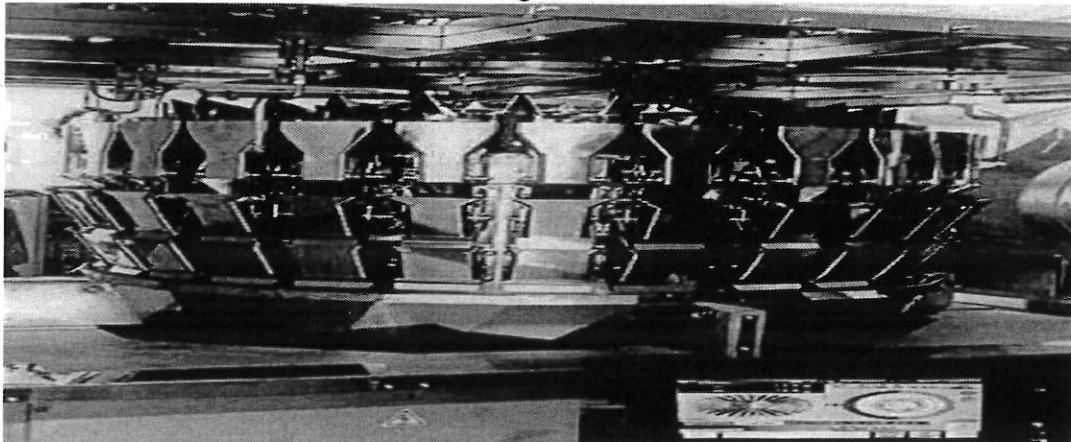
Whereas the Central Government, after considering the report submitted to it by prescribed authority, is satisfied that the model described in the said report (see the figure given below) is in conformity with the provisions of the Legal Metrology Act, 2009 (1 of 2010) and the Legal Metrology (Approval of Models) Rules, 2011 and the said model is likely to maintain its accuracy over periods of sustained use and to render accurate service under varied conditions;

Now, therefore, in exercise of the powers conferred by section 22 of the Legal Metrology Act, 2009 (1 of 2010) read with sub-rule (6) of rule 8 and sub-rule (4) of rule 11 of the Legal Metrology (Approval of Models) Rules, 2011, as per Schedule Seventh of the Legal Metrology (General) Rules, 2011, the Central Government hereby issues the certificate of approval of automatic gravimetric filling instrument belonging to accuracy class X(x), where x=1 of series "CCW-RV-2xx" and with brand name "ISHIDA" (hereinafter referred to as the said model), manufactured by M/s Ishida Co., Ltd., #44, Shogoin Sanno-Cho Sakyo-Ku, Kyoto, 606-8392, Japan and imported and marketed in India without any alteration by M/s Ishida India Private Limited, Plot No: B-4, MIDC Khandala, Phase-2 Industrial Area, Village-Kesurdi, Taluka-I, Pune-412801. Maharashtra which is assigned the approval mark IND/09/25/ 192 (the picture of the model is given below as Figure 1);

Technical Data:

Type of instrument	Automatic gravimetric filling instrument (Associative Selective Combination Weigher)
Working Principle	Strain gauge type load cell based
Accuracy class	X(x) where x=1
Maximum capacity	500 g
Minimum capacity	15g
Scale interval (d)	0.1 g
Filling speed	1 to 140 fills per minute (max)
No.of filling heads	Two
No of weighing heads	28
Power Supply	230 V, 50Hz AC
Load Cell	Make: Ishida; Shear Beam; Model: TLC-6, Capacity:58.8 N(6kg) ; Class: C3 ;
Type of Display	Colour LCD
Material to be filled	Free flowing materials like powder, chemicals, sugar, suji, rawa, rice ,ragi, etc.

Figure 1



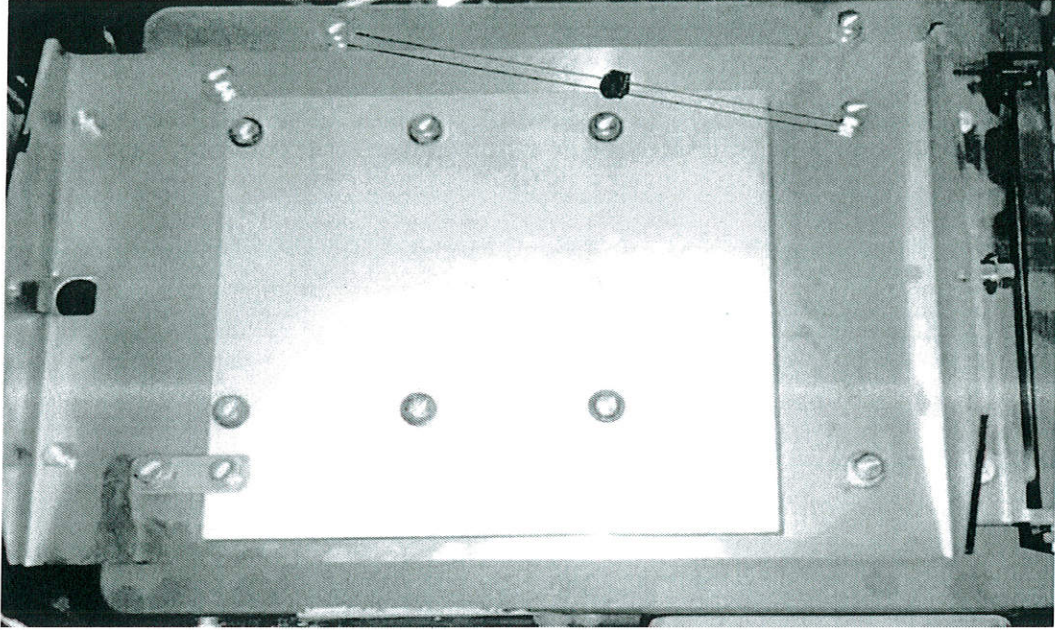


Figure 2

A typical schematic diagram of sealing provision to prevent the fraudulent practices of the model is given above as Figure 2. A dip switch has also been provided in the motherboard/PCB to disable access to external calibration.

[F.No. I-21/111/2025-W&M Section]

(Ashutosh Agarwal)

Director (Legal Metrology) to Govt. of India/ निदेशक (विधिक माप विज्ञान) भारत सरकार

Phone/दूरभाष 01123389489

Email/ई-मेल: dirwm-ca@nic.in

Online Application No. 22042